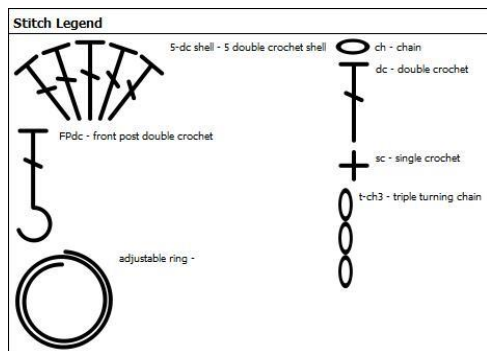




## CAL Belle Shawl – Časť 2



### ABBREVIATIONS:



**MIDDLE** – into the middle 3-chain space – 2dc,ch3,2dc

### Pattern

We finished the first part with row 8 (in green on the diagram) and the second part continues with row 9.

**Row 9** – ch4, 2dc into the chain space, then pattern \*dc, ch1 and skip1\* - repeat this until the last stich before the middle gap, dc, **MIDDLE**, then pattern \*dc, ch1 and skip1\* - repeat this until the last stich before the middle gap, dc, 2dc to the chain stich, ch1 and dc to the last stich (= 43 + 2 stiches on the side + ch3 in the middle)



**Row 10** – ch4, 2dc into the chain space, then make dc to each stitch, MIDDLE, then again make dc to each stitch, 2dc to the chain stitch, ch1 and dc to the last stitch (= 47 + 2 stitches on the side + ch3 in the middle)

**Row 11** – ch4, 2dc to the chain space, skip2 and 5-dc shell to the next stitch, skip2 and then pattern \*dc, skip2 and to the next stitch 5-dc shell and again skip2 sts\* - this pattern between \*- repeat 6 more time, then make MIDDLE. On the other side of the work, skip2 sts and into the next make 5-dc shell, skip2 and then pattern \*dc, skip2 and to the next stitch 5-dc shell and again skip2 sts\* - this pattern between \*- repeat 6 more time, then to the chain st make 2dc, ch1 and dc to the last stitch (= 51 + 2 stitches on the side + ch3 in the middle)

**Row 12** - ch4, 2dc into the chain space, then dc to the first stitch, then pattern \*dc, ch2 and sc to the third dc in the middle of the shell, ch2\* - this repeat in total 8 times, then 2dc, MIDDLE, then again dc to the first stitch, then pattern \*dc, ch2 and sc to the third dc in the middle of the shell, ch2\* - this repeat in total 8 times, then 2dc, 2dc to the chain stitch, ch1 and dc to the last stitch (= 55 + 2 stitches on the side + ch3 in the middle)

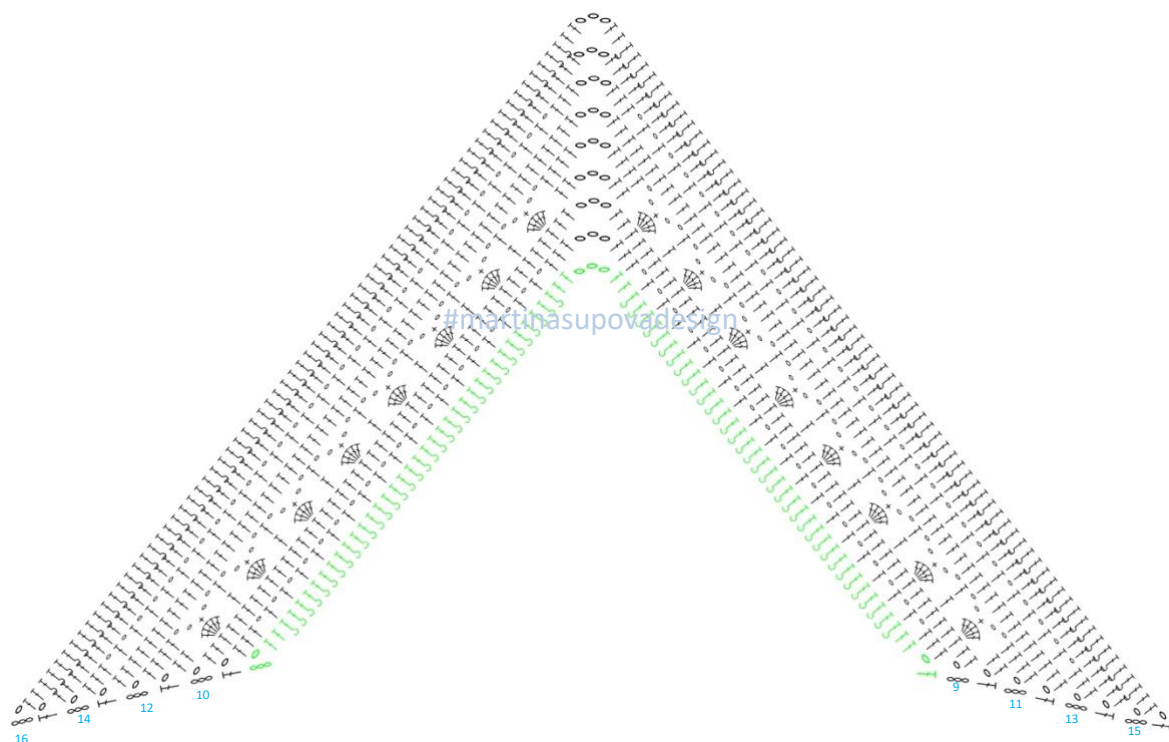
**Row 13** - ch4, 2dc into the chain space, then make dc to each stitch, MIDDLE, then again make dc to each stitch, 2dc to the chain stitch, ch1 and dc to the last stitch (= 59 + 2 stitches on the side + ch3 in the middle)

**Row 14** - ch4, 2dc into the chain space, then pattern \*dc, ch1 and skip1\* - repeat this until the last stitch before the middle gap, dc, MIDDLE, then pattern \*dc, ch1 and skip1\* - repeat this until the last stitch before the middle gap, dc, 2dc to the chain stitch, ch1 and dc to the last stitch (= 63 + 2 stitches on the side + ch3 in the middle)

**Row 15** - ch4, 2dc into the chain space, then make dc to each stitch, MIDDLE, then again make dc to each stitch, 2dc to the chain stitch, ch1 and dc to the last stitch (= 67 + 2 stitches on the side + ch3 in the middle)

**Row 16** - ch4, 2dc into the chain space, then make FPdc to each stitch, MIDDLE, then again make FPdc to each stitch, 2dc to the chain stitch, ch1 and dc to the last stitch (= 71 + 2 stitches on the side + ch3 in the middle)

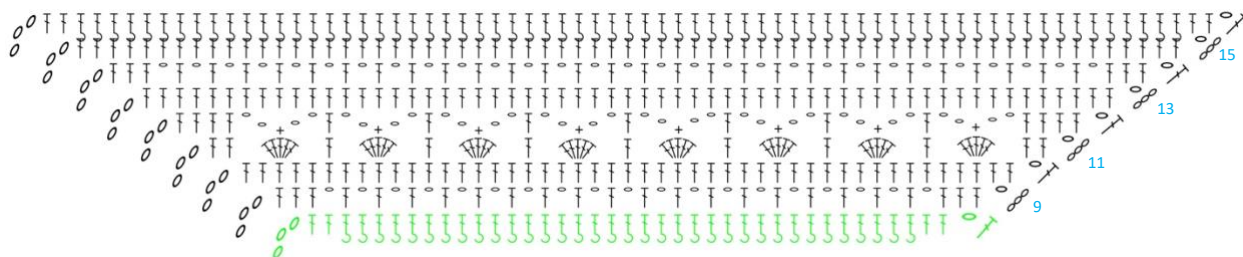
#### Diagram part 2



BELLE SHAWL IS A OWNER'S PATTERN #MARTINASUPOVADesign THE ENTIRE BELLE PATTERN AND ITS PARTS AND PHOTOGRAPHS INCLUDED IN THIS FILE ARE COPYRIGHTED AND MAY NOT BE SHARED OR SOLD AS YOUR OWN. UPLOADING AND PUBLISHING VIDEOS INCLUDING THE ENTIRE PATTERN OR PART OF IT IS PROHIBITED.



Diagram part 2 - right front side (left side is the same/mirror)



**This is the end of the second part of the tutorial. There will be changes in the next part, so stay tuned for the third part.**

**End of the second part, the next part will be published on 16th September**

MORE INFORMATION ABOUT THE PATTERNS CAN BE FOUND AT:

FACEBOOK - [HTTP://WWW.FACEBOOK.COM/COLORFULLMADESHOP](http://www.facebook.com/colorfullmadeshop)

FB GROUP SKUPINA MARTINA SUPOVA DESIGN - [HTTP://WWW.FACEBOOK.COM/GROUPS/651482826291780](http://www.facebook.com/groups/651482826291780)